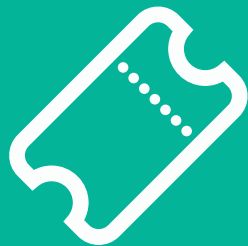


Riding the bus right!

Although our buses are serving schools, it is important to be mindful of other passengers onboard as these are not exclusive school services. Use the following tips to ensure your child is using the bus correctly:

- When waiting for the bus, please stand in an orderly queue ensuring you are not blocking the pavement for others.
- When at bus stops, be mindful of residents and don't play near the roads.
- Please allow passengers to disembark before stepping on the bus.
- If your bus arrives and is full, check the Stagecoach Bus app on your smartphone for the next bus and wait patiently, the KCC Travel Saver does not guarantee you a seat.
- Keep bags and feet off seats for other passengers to sit down.
- Be mindful of other passengers, keep noise levels low and don't play loud music or videos that could disrupt others
- If you see a vulnerable passenger, please offer your seat to them.
- If there is nowhere to sit, please move down the bus and hold onto the hand rail.
- When you reach your stop, press the bell only once to request your stop.



More information on tickets and offers:

Stagecoach Bus:

<https://www.stagecoachbus.com/promos-and-offers/south-east/kent-school-buses>

Kent County Council Travel Saver:

<https://www.kent.gov.uk/education-and-children/schools/school-transport/KCC-travel-saver>

Kent County Council Scholar's Pass:

<https://www.kent.gov.uk/education-and-children/schools/school-transport/free-school-transport>

Follow our X account, **@StagecoachSE** for the latest travel updates.



Catching the bus to school



Watch our 'How-to' video by scanning here



Catching the bus to school

Catching the bus can be daunting for some, especially when it coincides with starting secondary school. Make travelling to school a breeze with our how-to guide!

For journeys that are sociable, easy and environmentally friendly, whilst getting you to school on time!

Stagecoach South East has put together this leaflet for students who are transitioning towards using buses as part of their daily commute and serves as a guide for all students on how to behave on buses and at bus stops.

How to catch the bus to school:

Preparation is key for a successful journey to and from school. Make sure you have the Stagecoach Bus App downloaded on your phone, where you can get the latest travel information.

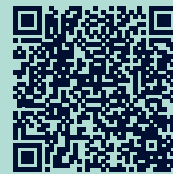
You can plan your journey on the app or website, the journey planner also details the number of stops from the pick-up to your destination and the approximate timings of the journey.

Stay APPdated!

Travelling to school is very simple when using the Stagecoach Bus app on your smartphone.

Plan journeys, check timetables and track your bus on the live map feature!

Stay in the loop when you download it from the App Store or Google Play!



Planning your journey:

We recommend that students familiarise themselves with their new bus journey. Ask a loved one to drive along the bus route or travel to your new school with a friend during the summer holidays so you feel more comfortable with where to get on and off come September!



We are here for you everyday of the week!

Your KCC Travel Saver pass gives you unlimited travel on buses from 6am to 7pm on Mondays to Fridays only, but you can use your Travel Saver pass to buy a £1 'KTS' single ticket on any Stagecoach bus in Kent outside these times.

Whether you want to study late, meet friends, or pop into town, you can get cheap travel outside KCC's selective hours and days!

Ticket options:

Children from year 7 to year 11 are eligible for a KCC Travel Saver Pass, where you can save up to 50% off travel costs. You can apply for this on the Kent County Council website, your pass will be given to you on your first day at school by your teacher.

Children that live more than 3 miles from the school using the shortest available walking route, maybe eligible for a free school transport pass, called a Scholars Pass. Find out more on the Kent County Council website.

Stagecoach has alternative ticket options available on its website and app including daily, weekly and monthly tickets for travelling in a

