

#SummerByBus



Days out by bus

in Hampshire

BIG attraction discounts inside!



Winchester Cathedral

As one of Southern England's most historic buildings, Winchester Cathedral boasts centuries of English heritage

Marvel at stunning architecture, beautiful stained glass, and priceless treasures as you explore this ancient place of worship. Alight at Winchester Bus Station or The Broadway for a short walk to Winchester Cathedral.

Sleeped in history, one of the best ways to explore the Cathedral is with a guide, who will be able to tell you about its fascinating past and the people associated with it.

You will discover the vaults of the Cathedral's crypt, Jane Austen's grave and the Great West Window. You can also book a Tower Tour which leads up onto the roof for panoramic views.

A range of events takes place throughout the year, from classical concerts, open-air theatre and art exhibitions.

This year, Luxmuralis returns from late October to the first week of November. Visitors to the spectacular light show will be immersed within the art itself as you walk through cascades of poppies.

Get 2 for 1 entry!

Two Stagecoach customers can visit the Cathedral for the price of one on Monday and Tuesdays between 6th June and 1st December 2023, when you show a valid dated bus ticket.

For details on how to redeem your offer and T&C's scan QR code on the back page.

For details on how to redeem your offer and T&C's scan QR code on the back page.

Get 10% OFF hot drinks!

Stagecoach customers can enjoy 10% off hot drinks in the café between 2nd July and 4th September 2023, when you show a valid dated bus ticket.

Inspired by the South Downs National Park, enjoy a range of natural science activities in Bio:Space. Watch the ant colony, beetles and worms, and learn about our local environment.

Explorer:Space is filled with fantastic things to see and do. Learn about robots and coding or take a look at exhibits for meteorites and stardust. Hear why science sounds amazing with the sound, hearing and vibration exhibition where you can pluck the strings of a giant guitar or experience the acoustics of a sonic rocket!

Fly through space in the Planetarium; the massive screens will make you feel like you're surrounded by planets and stars. Watch fun characters head off on exciting adventures in a subtitled film show or listen to the space hero Inspirers telling amazing stories about the Solar System.

Explorer:Space is filled with fantastic things to see and do. Learn about robots and coding or take a look at exhibits for meteorites and stardust. Hear why science sounds amazing with the sound, hearing and vibration exhibition where you can pluck the strings of a giant guitar or experience the acoustics of a sonic rocket!

Get hands-on for an action-packed family adventure - watch as science comes to life through explosive shows and huge demos.

Winchester Science Centre & Planetarium



Your routes in Hampshire

Route 13/13a in Andover

Hourly services between Picket Piece and Andover. Hope off at Finkley Down Farm for a great day of activities.

Route 38 in Petersfield & Alton

Journeys Monday-Friday between these two picturesque market towns in the heart of Hampshire.

Route 76 in Andover, Whitchurch & Basingstoke

Hourly services between Andover & Basingstoke. **Up to every 30 minutes** between Whitchurch and Basingstoke. Visit Whitchurch Silk Mill or Bombay Sapphire Distillery.

Route 86 in Whitchurch & Winchester

Up to every hour between Winchester. Find the Royal Logistic Corps Museum en route, or travel to Winchester for shopping, leisure and views of the infamous Winchester Cathedral.

Basingstoke buses

Our entire Basingstoke network starts and finishes at the bus and rail station. Connecting you to Kempshott, Beggarwood, Hatch Warren, Brighton Hill, Old Basing, Chineham, Popley, Tadley, Winklebury & up to Newbury.

Route 8 in Basingstoke, Kempshott & Hatch Warren

Every 20 minutes between Basingstoke, Buckskin, Kempshott & Hatch Warren. The interactive Milestones Museum is a great day out, with cobbled streets and replica buildings, immerse yourself in 1930's Hampshire.

Route 11 in Basingstoke & Oakley

Hourly services connecting Oakley and Basingstoke. Basingstoke Leisure Park has a great variety of activities to try out, and a selection of food and drink establishments to choose from as well.

Have a concessionary pass?

Enjoy some amazing days out for free!

For more information or to apply visit your local Council's website.

Child (5-15) £6 Adult £8 Group £16

Gold DayRider tickets

unlimited travel further afield, all day

Child (5-15) £6 Adult £8 Group £16

NEW Group ticket get unlimited travel for up to 4 people, now of any age.

DayRider tickets are available in other areas, for the full range visit stagecoachbus.com/tickets

Winchester Child (5-15) £3.50 Adult £4.50 Group £15

Basingstoke Child (5-15) £3.50 Adult £4.50 Group £15

Andover Child (5-15) £3.50 Adult £4.50 Group £15

DayRider tickets

unlimited travel, all day on Stagecoach services

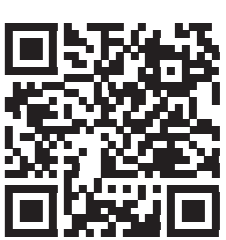


Single tickets

All Single fares just £2 until November.

The Bus Fare Cap Grant scheme is a Government funded scheme introduced on most single (including Child and Student) bus journeys across England from 1st January 2023 until 31st October 2023. Singles will be just £2.50 from 1st November.

Great value tickets



Including details on how to redeem and T&Cs.

Scan me for BIG discounts!

Stagecoach South, The Bus Station, Southgate, Chichester, West Sussex, PO19 8DG

Tel: **0345 241 8000**

Email: customer.services@stagecoachbus.com

For offers, events and what to do along our routes...

Follow us on social media: [@StagecoachSouth](https://www.instagram.com/StagecoachSouth)

Follow us on social media: [@StagecoachSouth](https://www.facebook.com/StagecoachSouth)

Follow us on social media: [StagecoachBus](https://www.facebook.com/StagecoachBus)

Contact us

Route 66 in Winchester & Romsey

Hourly services between Winchester and Romsey. Stop off at Sir Harold Hilliers and explore the arboretum. Carry on to Romsey and enjoy its war memorial park.

Route 67 in Winchester & Petersfield

Journeys stopping at East and West Meon - the perfect starting point for walking into the South Downs. Stop in Alresford for its unique boutiques and local businesses.

Route 69 in Winchester & Fareham

Hourly services between Winchester and Fareham, through rural Hampshire. Visit the grand Bishops Waltham Palace along the route. On Sundays we even serve Marwell Zoo, home to hundreds of exotic and endangered animals.

See the map inside for our top picks of attractions to visit on these services!

Win free travel!

Use the hashtag #SummerByBus showing us your days out across our network, for a chance to win free travel! Scan the QR code for more details.



Find nearby buses and stops on our live map.

Tap on a service to see where it's heading and what time it'll get there.



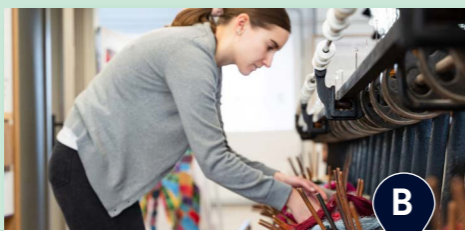


Finkley Down Farm

With a massive indoor play barn and the Little Farmers Driving School. Throughout the day there are animal handling and feeding activities for children to get involved in. Meerkat Mansion is the latest addition making a Farm-tastic day out!

finkleydownfarm.co.uk

Catch service 13 or 13a

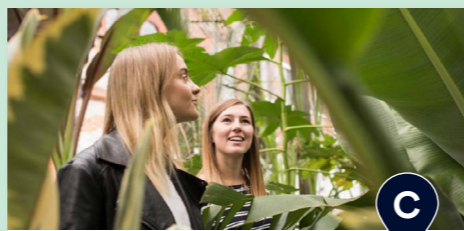


Whitchurch Silk Mill

A 19th century water mill that weaves British silk fabrics. Whether you're machine-mad, an admirer of silk fabrics, or just looking for a delightful day out, the Mill has something for you.

whitchurchsilkmill.org.uk

Catch service 76 or 86



Bombay Sapphire Distillery

Uncover the secrets of Bombay Sapphire gin on the site of a former paper mill. Learn about the rare production processes used to make the gin and maybe try a cocktail class?

bombaysapphire.com/distillery

Catch service 76

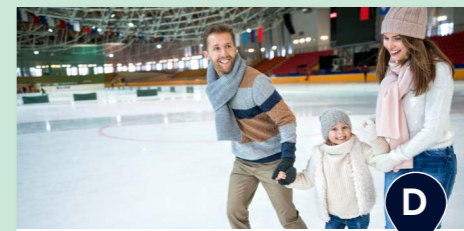


Milestones Museum

Immerse yourself in the past. Explore the streets, shops & buildings to discover how people used to live, buy a ration of sweets from the 1940s sweet shop, view the unique collection of vintage vehicles or have a go in the penny arcade!

milestonesmuseum.org.uk

Catch services 8, 11 or 76



Basingstoke Leisure Park

Your choice of the cinema, adventure gold, ice skating, bowling, and even indoor skydiving, all at Basingstoke Leisure Park. Find food and drink outlets, and activities for all the family.

basingstokeleisure.com

Catch services 8, 11 or 76



Festival Place

A shopping centre housing over 140 big brand stores including Next, M&S, Apple, H&M, & Jack Wills. Plus over 20 eateries including Côte Brasserie, Las Iguanas, Ask, Pizza Express, Wagamama, Pret, Five Guys, & Nando's and a 10 screen cinema.

festivalplace.co.uk

Any Basingstoke bound bus



Royal Logistic Corps Museum

An insight to how the British Army was moved, supplied and sustained over the centuries. With a collection of uniforms, badges, military vehicles and equipment, dating as far back as the 1800's.

royallogisticcorps.co.uk/museum

Catch service 86



Sir Harold Hillier Gardens

Situated in Ampfield, just outside Romsey, Sir Harold Hillier Gardens is an arboretum covering 180 acres and accommodating over 42,000 trees and shrubs - most notably an almost unparalleled collection of oaks, camellia, magnolia and rhododendron.

bit.ly/hilliergardens

Catch service 66



Theatre Royal Winchester

Offering drama, dance, music, comedy, children's theatre and more, as well as educational and community activities. The Cafe Bar serves specialist coffee, teas and light bites in spectacular surroundings.

theatroyalwinchester.co.uk

Any Winchester bound bus



The Great Hall

Visit the iconic Round Table of Arthurian legend taking pride of place in Winchester's ancient Great Hall. From the Hollow Crown to Wolf Hall, to Antony Gormley and beyond - the Great Hall has been a stunning backdrop for film and the arts.

bit.ly/greathallwinchester

Any Winchester bound bus



Winchester Cathedral

Discover one of the finest medieval cathedrals in Europe. With a captivating history and magnificent architecture, Winchester Cathedral has been a living place of worship and welcome for over 900 years.

winchester-cathedral.org.uk

Any Winchester bound bus

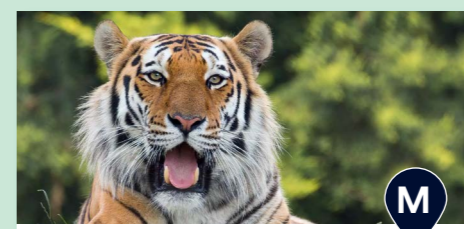


Winchester Science Centre & Planetarium

Blast off on an out-of-this-world journey through Explorer:Space. See science come to life with big explosions and fly through the Solar System in an experience you'll never forget in the Planetarium.

winchestersciencecentre.org

Catch service 64



Marwell Zoo

There 149 species of exotic and endangered animals to see, including snow leopards, tigers, lemurs & giraffes to name a few. With events and exhibits throughout the year (check for feeding times) and a choice of catering outlets and adventure playgrounds.

marwell.org.uk

Catch service 69 (Sundays only)



Bishop's Waltham Palace

Take a stroll around this moated ancient palace, dating back to the 12th and 14th century. Check out the impressive ruins and restorations, all set within the serene palace grounds. The Bishop Waltham Museum is located here too for exhibits and displays from the local area.

bit.ly/BishopsWaltham

Catch service 69



Going further?

We run lots more services which are not shown on this map. For more information and full network maps visit stagecoachbus.com



The Watercress Line

At the railway you can enjoy the perfect day out for all the family, with plenty of activities included in the ticket price: play in the brand-new playground and experience the thrill of a trip on a steam train through the spectacular Hampshire countryside.

watercressline.co.uk

Catch services 64, 67 or 13, 38 or 65



Jane Austen's House

Her final home, it was within these walls that Jane wrote and revised her six beloved novels. Step back in time to 1816 and follow in Jane's footsteps as you explore the rooms where she lived and wrote. The pretty garden is a perfect place to relax after your visit.

janeaustens.house

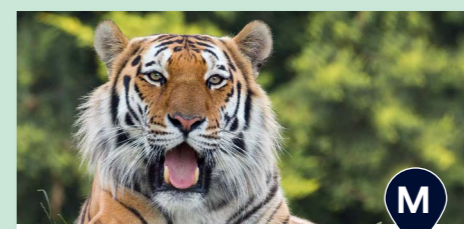
Catch service 38 or 64



Get 2 for 1 entry overleaf!



Get 10% OFF hot drinks overleaf!

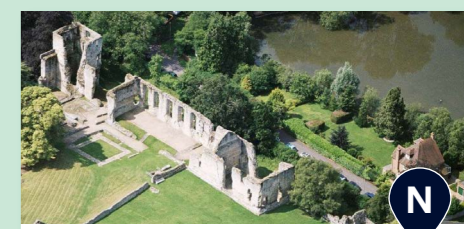


Marwell Zoo

There 149 species of exotic and endangered animals to see, including snow leopards, tigers, lemurs & giraffes to name a few. With events and exhibits throughout the year (check for feeding times) and a choice of catering outlets and adventure playgrounds.

marwell.org.uk

Catch service 69 (Sundays only)



Bishop's Waltham Palace

Take a stroll around this moated ancient palace, dating back to the 12th and 14th century. Check out the impressive ruins and restorations, all set within the serene palace grounds. The Bishop Waltham Museum is located here too for exhibits and displays from the local area.

bit.ly/BishopsWaltham

Catch service 69